



# ePlayer

## User Guide

# Content

<b>Chapter 1 Introduction .....</b>	<b>3</b>
1-1 Product Information.....	3
1-2 Product Features .....	3
<b>Chapter 2 System Requirements.....</b>	<b>3</b>
2-1 Hardware.....	3
2-2 MS Windows .....	3
2-3 Software Requirements .....	3
<b>Chapter 3 Installation.....</b>	<b>4</b>
3-1 Starting Installation.....	4
3-2 Install ePlayer.....	4
<b>Chapter 4 Playback Function.....</b>	<b>7</b>
4-1 ePlayer .....	7
4-2 Video Playback .....	7
4-2-1 Play video from Record.....	8
4-2-2 Play video from Directory.....	9
4-2-3 Play video by Time.....	10
<b>Chapter 5 FAQ .....</b>	<b>16</b>
5-1 FrameWork Compatibility .....	16
5-2 FrameWork Installation .....	16

# **Chapter 1. Introduction**

## **1-1 Product Information**

This manual introduces ePlayer software.  
ePlayer allows the playback of videos recorded by DVRs.

Playback of recorded videos can be selected by record, *directory* or *time*.

## **1-2 Product Features**

1. Preview function
2. Capture and store

# **Chapter 2. System Requirements**

## **2-1 Hardware**

RAM	512 MB above minimum
CPU	3.0 GHz above minimum

## **2-2 MS Windows**

MS Windows 2000/XP/VISTA/W7

## **2-3 Software Requirements**

1. ePlayer 4.10 or above
2. FrameWork 2.0 or above (please refer to Chapter 5 for details)

# **Chapter 3. Installation**

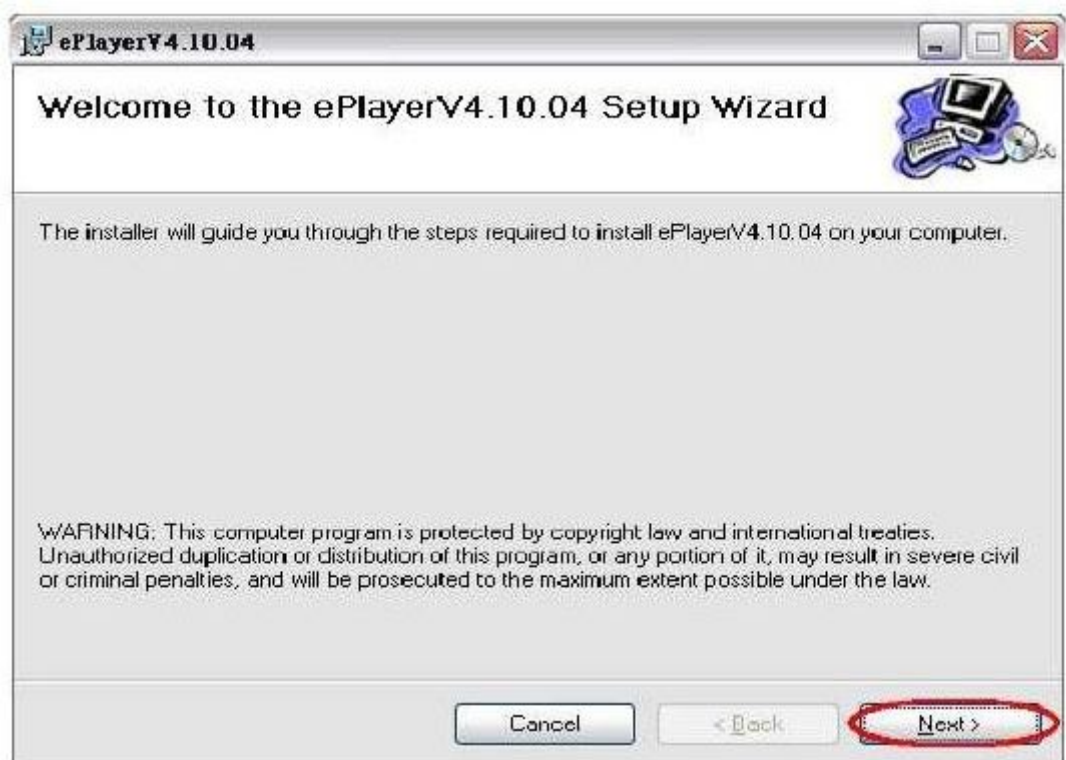
## **3-1 Starting Installation**

**Step 1** Insert the software CD into the CD-ROM drive. The installation menu will be automatically popped up on the screen. Please click the Open folder to view files

**Step2** Click ePlayer 4.10.04 to start the installation.

## **3-2 Install ePlayer**

**Step 1** Select ePlayer V4.10.04 Install



**Step 2** Select Browse to choose the destination folder and click Next .



**Step 3** Click Next to start the installation.

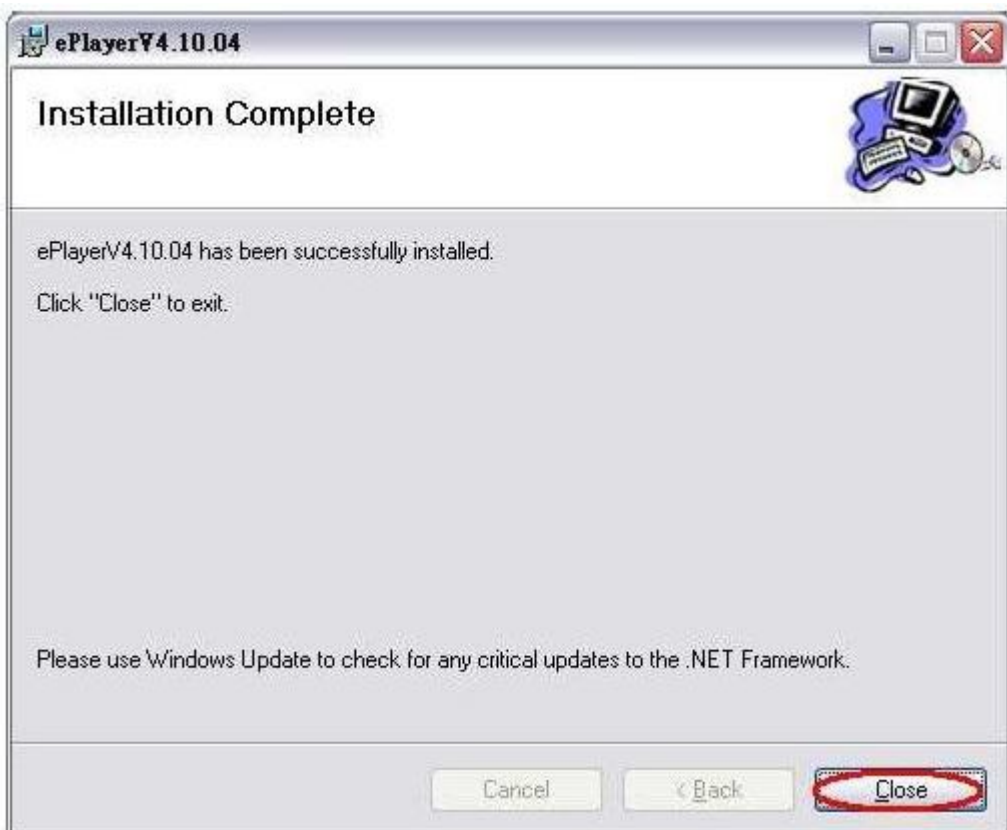




Waiting for installation process.



**Step 4** The installation has been completed. Please click Close to exit.



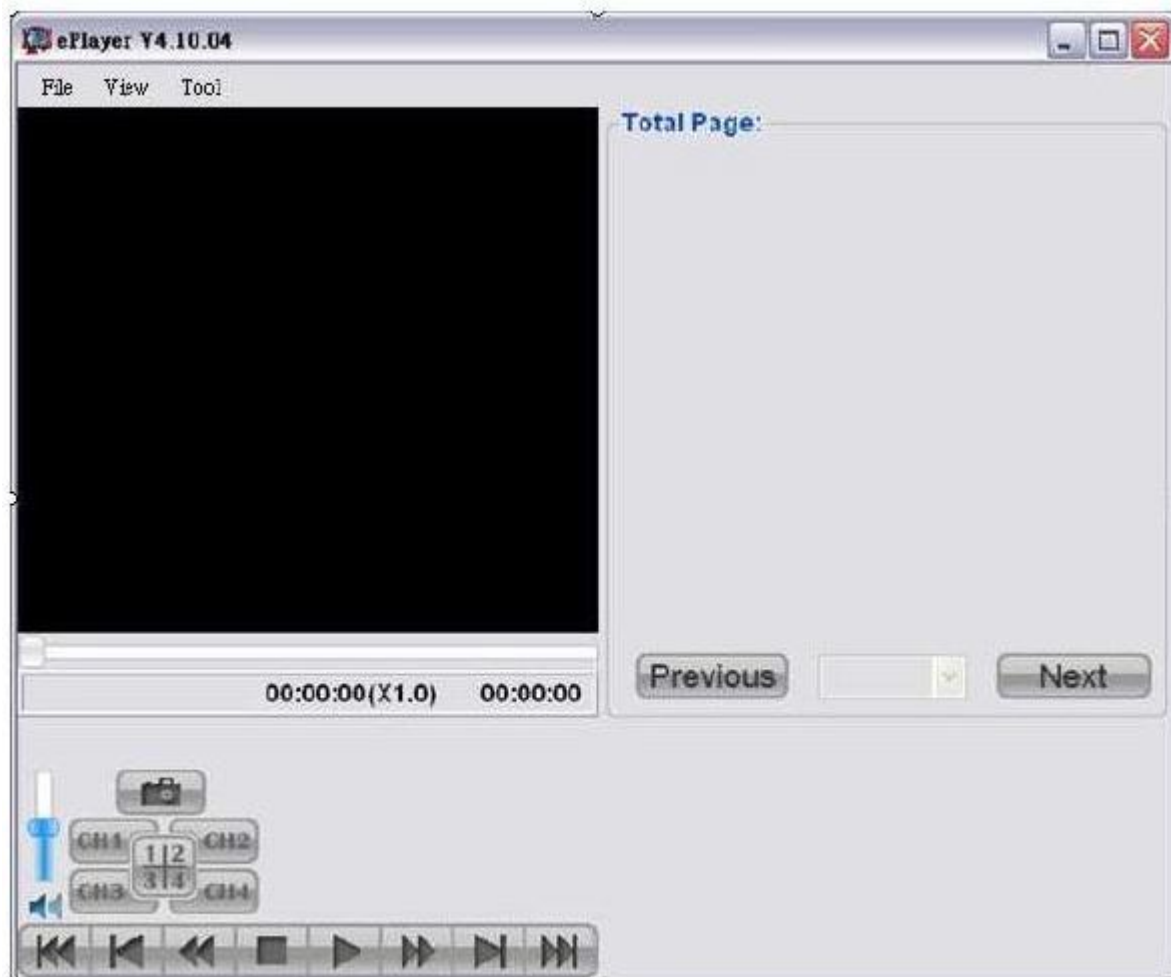
## Chapter 4. Playback Function

### 4-1 ePlayer



**Step 1 :** After ePlayer installation, click on the desktop.

**Step 2 :** The screen will show the window of ePlayer V4.10.04.

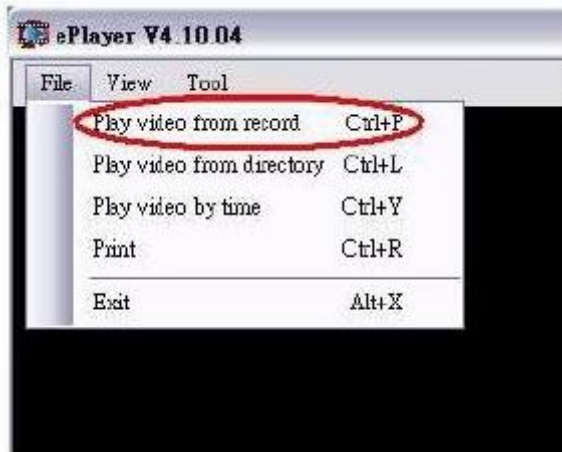


## 4-2 Video Playback

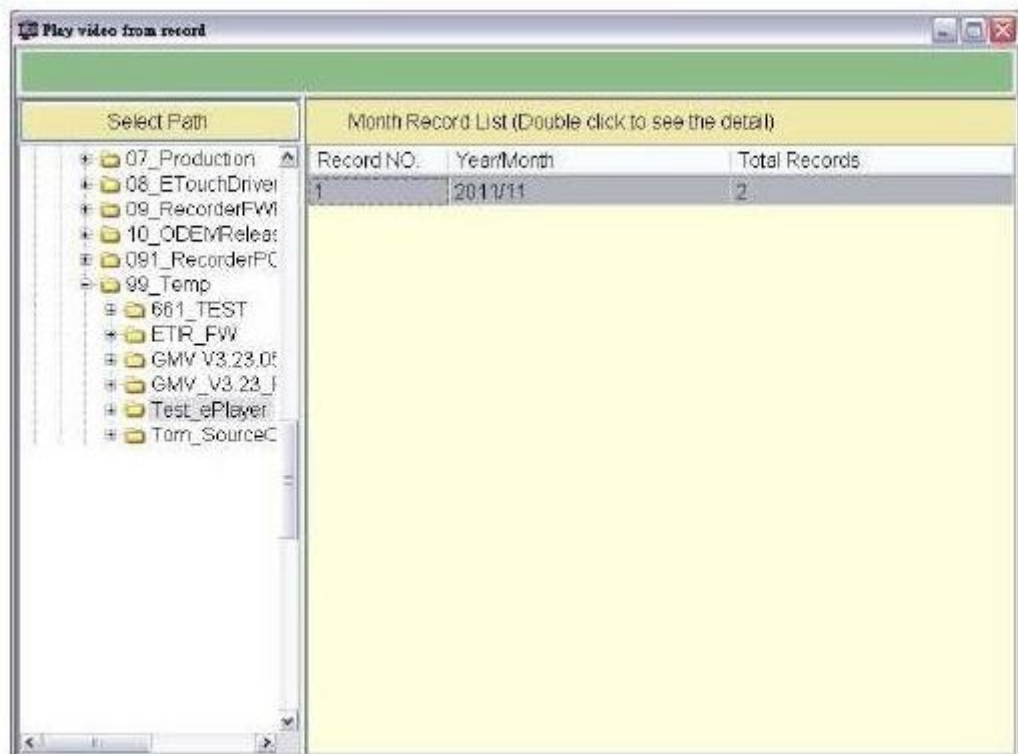
There are three ways to search the video you would like to play.

### 4-2-1 Play video from "Record"

**Step 1** Click File and chooses Play video from record .



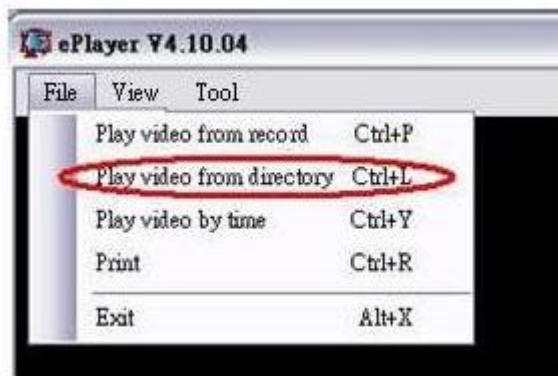
**Step 2** Search the video by record.



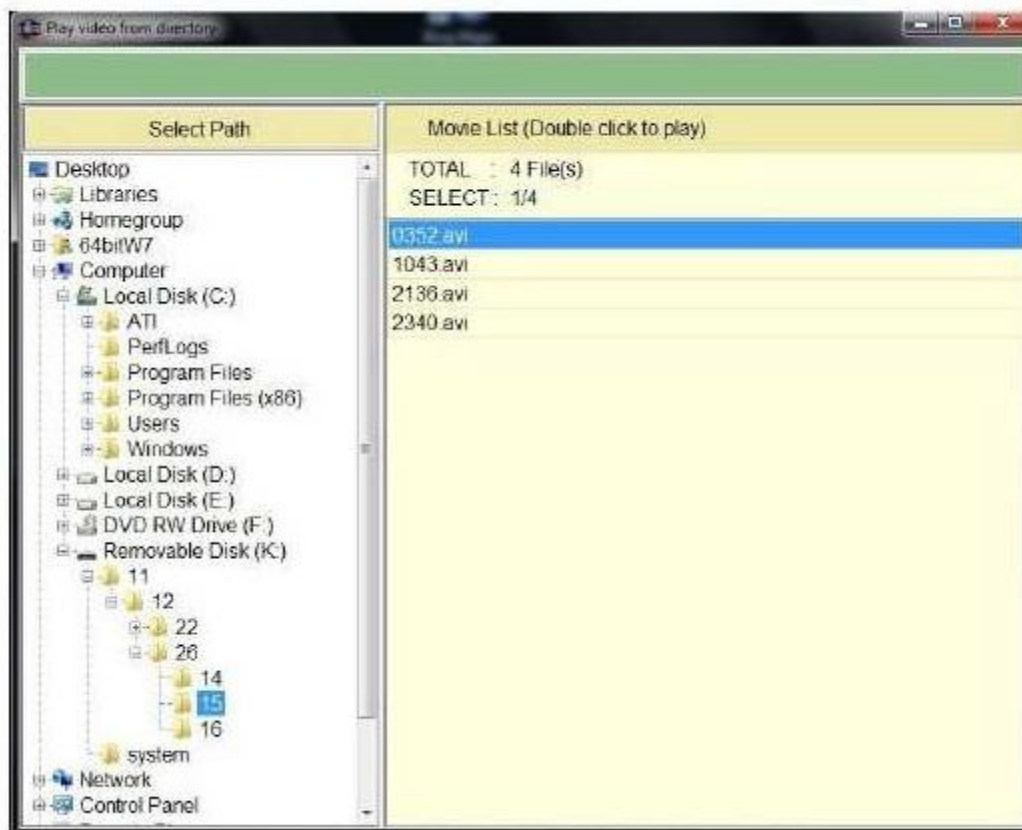


## 4-2-2 Play video from “Directory”

**Step 1** Click File and choose Play video from directory .



**Step 2** Search the video by directory (year/month/date/hour).

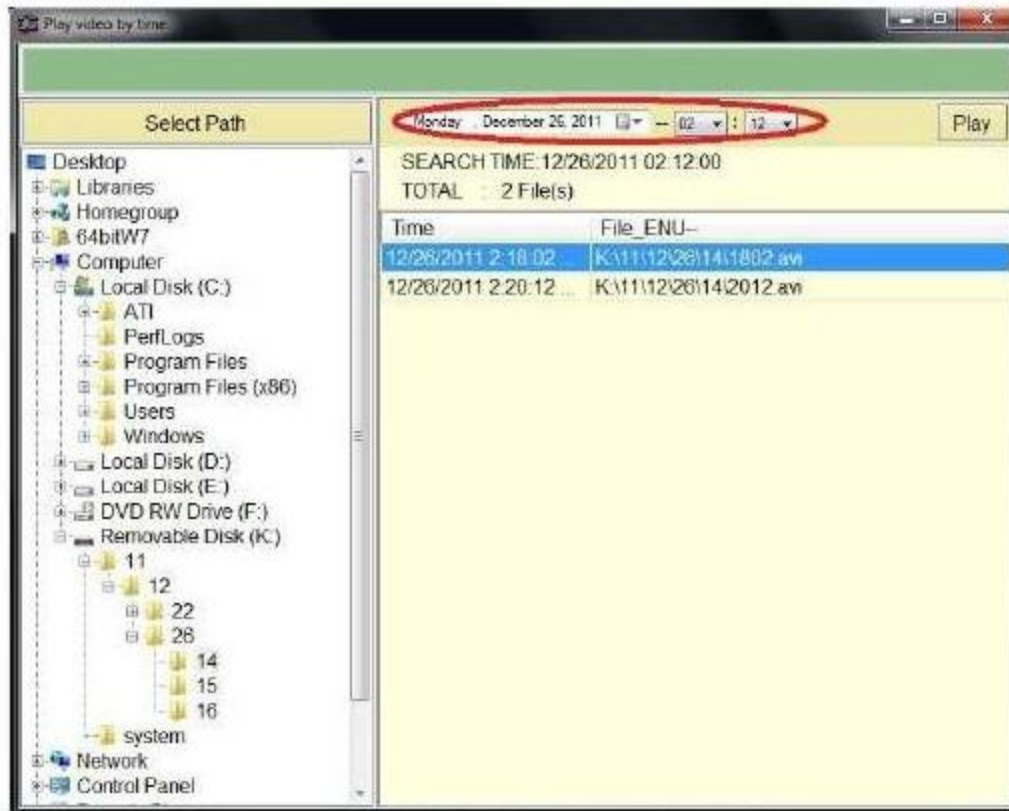


## 4-2-3 Play video by "Time"

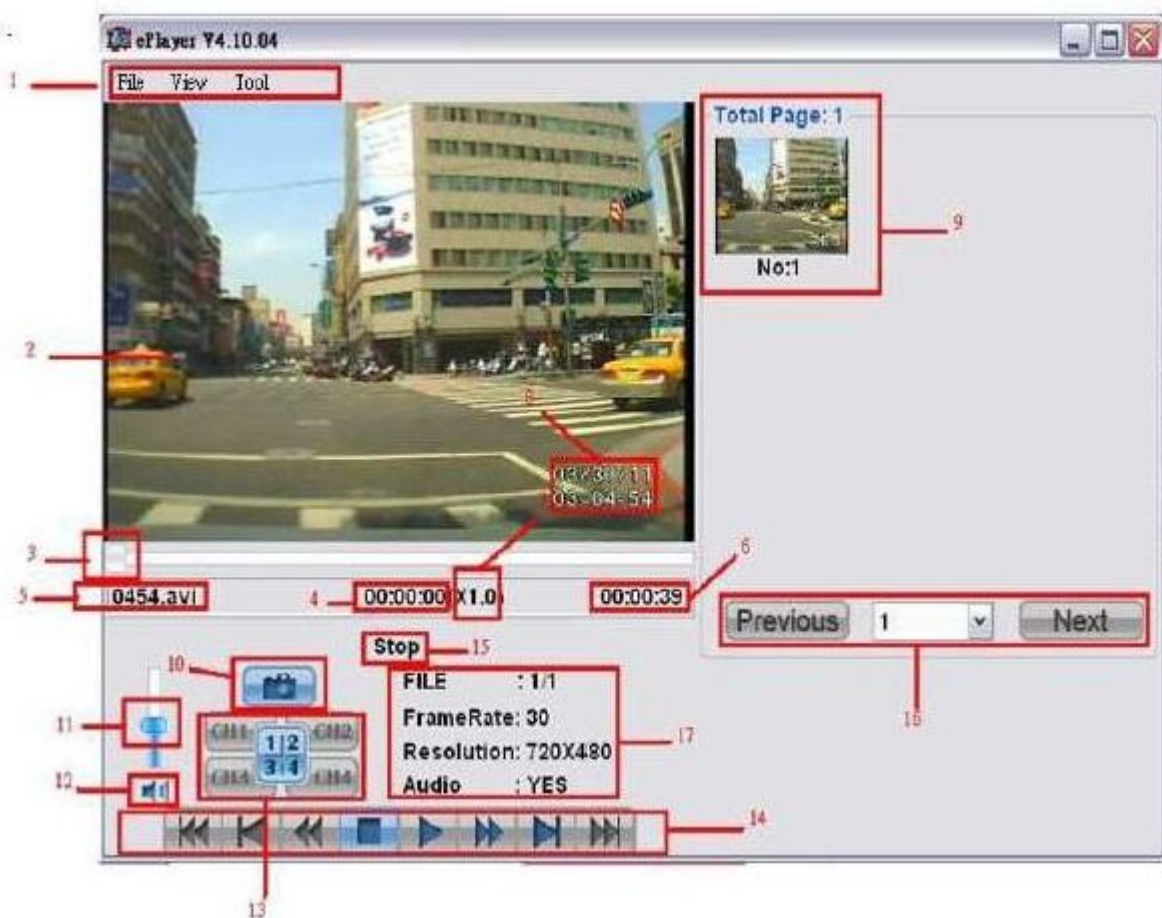
**Step 1** Click File and choose Play video by time .



**Step 2** Search the video by time.



## Full Size Playback Screen Description



1. **Main Function**
  2. **Video Playback Window**
  3. **Horizontal Scroll Bar:** Drag the horizontal Scroll Bar with the mouse to change the current view shown in the playback window
  4. **Current Time** The time within recorded period of the playback that is being viewed in the playback window.
  5. **Video File Name**
  6. **Video Length:** Total time of the video selected for playback.
  7. **Image Zoom In/Out (X8.0 Max.):** Using mouse scroll wheel to zoom in or zoom out the image.
  8. **Video Date/Time**
  9. **Preview Images:** Double-click on any preview image you would like to play.
  10. **Image Capture:** Click the icon to capture the video image. Or click “pause” first and then click image capture icon.
  - 11&12. **Adjust Volume**
- NOTE** - The volume function only work if the file is audio recorded.

**13. Channel Selection**

**14. Control Bar :**

Step Backward

Back Forward X2

Stop the playback

Play and Pause the playback

Fast Forward X2

Step Forward

Next File (only work if the event are over 2 files)

**15. Current Status**

**16. Previous/Next File**

**17. File Status** (Frame Rate, Resolution, Audio)

\* These settings cannot be adjusted in the playback screen.

## Main Menu Description

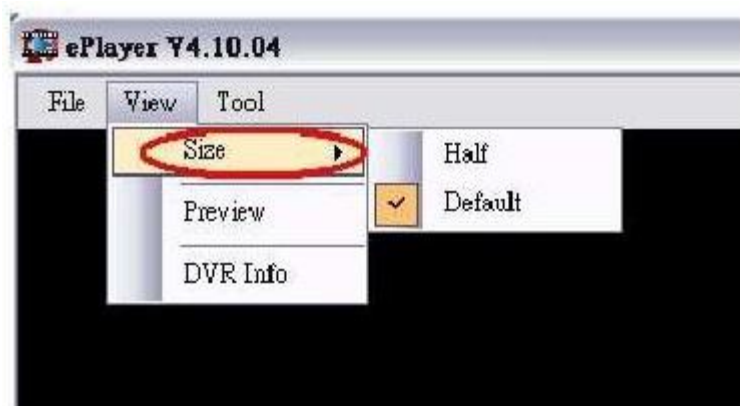
### File

1. Print Screen.
2. Exit ePlayer.



### View

1. **Size** : Choose "Size" to adjust the screen size to Default or Half.



2. **Preview** :
  - 2.1 Enable preview function.





## 2.2 Disable preview function.



## 3. DVR Info

Display the detailed information about DVR







## Tool

Configuration : It will show the video length.



## **Chapter 5. FAQ**

If the eplayer\_V4.10.04 is not able to install, please download FrameWork 3.5 and install [dotnetfx35.exe](#).

<http://download.microsoft.com/download/6/0/f/60fc5854-3cb8-4892-b6db-bd4f42510f28/dotnetfx35.exe>

### **5-1 FrameWork Compatibility**

Version 3.5 is compatible with version 2.0 and 3.0.

Version 4.0 is NOT compatible with any older version.

### **5-2 FrameWork Installation**

5-2-1 : Win 7 OS is including FrameWork version 2.0 and 3.5.

XP OS is NOT including FrameWork.

5-2-2 : If it is XP OS, it is required to install FrameWork 2.0 or 3.5 before ePlayer installation.